



Installation Guide

WALL CLEAT INSTALLATION for LED Illuminated Mirrors

REFLECTIVE LIGHTING

BEFORE YOU BEGIN

A professional is required to complete the wiring for the mirror's light. Consult a licensed electrician. Signature Hardware accepts no liability for any damage to the home, product, or for personal injury during installation.

Observe all local plumbing and building codes.

Unpack and inspect the items for damage. If any damage is found, contact our Customer Relations team

GETTING STARTED

- Ensure that you have gathered all of the required materials that are needed for the installation.
- Because the specification measurements are approximate and slight variations may occur, we highly recommend waiting until the mirror is on-site before starting rough-in procedures.

Tools Required(not provided)



Drill



Level



Pencil



Tape Measure

Measure the distance the brackets to the top of mirror, mark the distance on the wall, check the marks are level. drill the holes, insert the wall plugs and either fix another brackets.



1



2



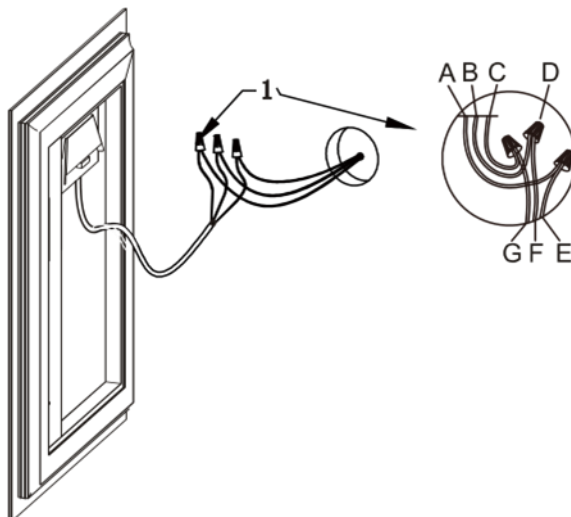
3



4



WIRING DIAGRAM



- A-Black wire(L)
- B-White wire(N)
- C-Green wire/Bare copper (G)
- D-Wire nut x 3
- E-Black wire(L)
- F-White wire(N)
- G-Green wire/Bare copper (G)

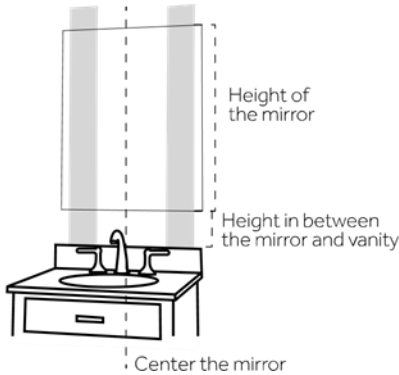


Installation Guide

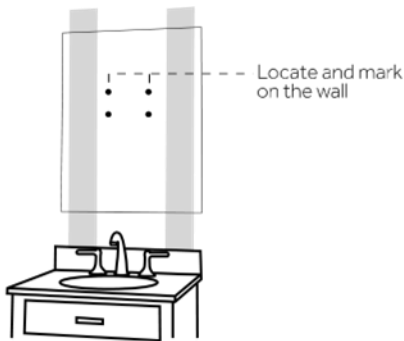
WALL CLEAT INSTALLATION for LED Illuminated Mirrors

REFLECTIVE LIGHTING

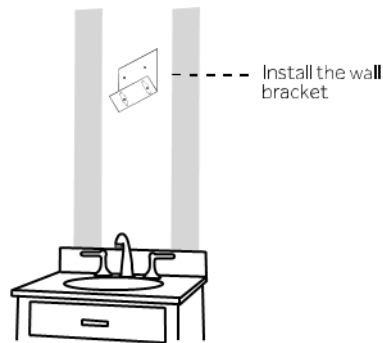
INSTALLATION (WITH MOUNTING BRACKET)



1. Center the mirror above the sink at the appropriate height and draw a leveled outline of your Mirror on the wall.

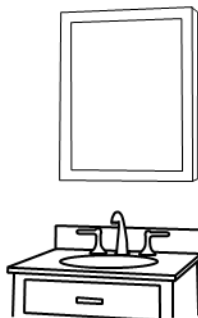


2. Locate and mark the position of the wall studs to which you will fasten your mirror. You can find studs by listening for a solid sound as you knock on the wall or by using a stud finder.



3. Measure the location of the bracket on the back of the mirror to determine the location of your wall bracket. Use the top of the mirror as your guideline. Use your level to verify that the wall bracket is properly aligned.

4. Drill pilot holes and install the wall bracket. Because wall construction and materials vary from home to home, the appropriate mounting hardware may need to be purchased from your local hardware store. Consult a professional if you are unfamiliar with this type of installation.



5. Secure the mirror to the wall studs with the mounting hardware (provided). Make sure that your mirror is level.



Installation Guide

KEY HOLE INSTALLATION for LED Illuminated Mirrors

REFLECTIVE LIGHTING

GETTING STARTED

- Ensure that you have gathered all of the required materials that are needed for the installation.
- Because the specification measurements are approximate and slight variations may occur, we highly recommend waiting until the mirror is on-site before starting rough-in procedures.

Tools Required(not provided)



Drill



Level



Pencil



Tape Measure

INSTALLATION

1. Open the carton and make sure all the parts listed below are present.



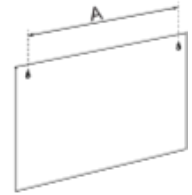
4pcs



4pcs



2. Measure the distance between the two brackets, mark the distance on the wall, check the marks are level. drill the holes, insert the wall plugs and either insert screw



3. wiring diagram.

A-Black wire(L)
B-White wire(N)
C-Green wire/Bare copper (G)
D-Wire nut x 3
E-Black wire(L)
F-White wire(N)
G-Green wire/Bare copper (G)



4. Hang the mirror onto the wall.

