



Prominence Edge Series

FULL COVERAGE OFFSET 2" FROM EDGE LED Illuminated Mirror

REFLECTIVE LIGHTING

DESCRIPTION

The Prominence Edge Series offers you a full edge to edge light coverage with a 2" offset around the perimeter of the mirror as well as the option of a sleek square edge or rounded corners. Available in a fully customizable rectangular or square silhouette. The optional one-touch dimming system allows you to choose the perfect light intensity and color temperature—from a cool 5,000K task lighting to a warm, sunlit 2,700K glow. Elevate your experience even further with upgrades like an integrated night light, a built-in Bluetooth speaker, and other user-friendly features that transform your mirror into a personalized statement of style and function.

APPLICATION

Our commercial grade mirrors are perfect for hotels, spas, salons, and make-up studios as well as make a beautiful upgrade for any bathroom remodel.

STANDARD FEATURES

- 5mm lead-free, copper-free, corrosion-resistant glass
- Forward-facing, UV Free task lighting
- IP44 Rating, suitable for damp locations
- Fingerprint free frosted design aesthetic for added elegance
- Most common size is 24" x 32", however custom sizes and frosting options are available
- Rectangle mirrors can be mounted both vertically or horizontally; specified as an option
- Environmentally sustainable and energy efficient LED technology
- Fast lead times and easy installation
- 5-year limited warranty

LIGHTING SPECIFICATIONS

- Natural-looking LED light color
- Dimmable with 0-10V, TRIAC, reverse/forward phase standard
- CRI: 90+
- Multi-CCT available: 2700K-5000K
- 80-90 LPW initial lumens
- 120-277 VAC voltage sensing input
- Calculated L70-hour 50,000 hour LED lifespan

SAFETY SPECIFICATIONS

- Entire assembly meets UL standards
- IP44 rating for damp locations
- IP65 rating optional
- Safety filmed mirror to protect against glass shatter



| | |
|-------------------|-------|
| Catalog Number: | Type: |
| Project/Job Name: | |
| Prepared By: | Date: |



Fully Customizable

AVAILABLE OPTIONS

- Integrated one-touch dimming control for ambient lighting
- Motion and Touch sensor on/off switch capabilities for ease of use
- Anti-Fog, Anti-Microbial, and/or Anti-Graffiti technology enhancements
- Lighted circular magnification/makeup mirror function
- Integrated Night Light, and/or Bluetooth Speaker
- Horizontal or vertical mounting bracket



Positioned Inside
2 inches From Edge



Magnification
Function Added



Positioned Inside
2 inches From Edge



Magnification
Function Added



Anti
Microbial



Touch Sensor
Switch



Motion Sensor
Switch



Anti-Fog
System



Rounded
Edge Corner



Night
Light



Anti
Graffiti



Integrated
Dimming



Adjustable
CCT



Bluetooth
Speaker



Circular
Magnification



IP65
Rated

Specifications are subject to change without notice. Installation must be performed in accordance with Reflective Lighting installation instructions.

118 E 3RD ST SUITE K | PERRYSBURG, OH 43551 | 419-908-2759 | WEBSITE: REFLECTIVE.LIGHTING



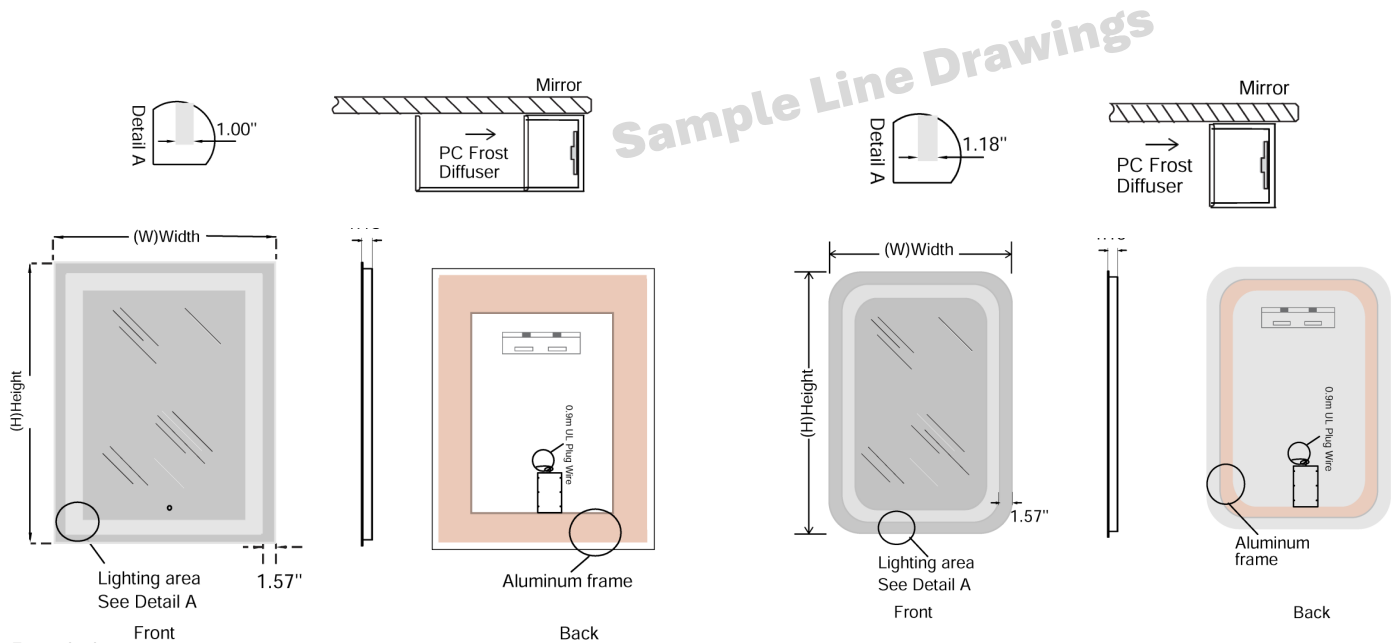
Prominence Edge Series

FULL COVERAGE OFFSET 2" FROM EDGE LED Illuminated Mirror

REFLECTIVE LIGHTING

INSTALLATION SPECIFICATIONS

- 24" bare wire whip provided
- Chassis should be mounted to wall studs; mounting holes are provided



Pick Your Options

ORDERING INFORMATION

EXAMPLE: RLPE-RT-H-48-32-AC-TC-T-AF-NL-BT

| Lighted Mirror | Shape | Orientation | Height | Width | Color Temp | Controls | Control Location | Options (List ALL that apply) |
|----------------|--------------|---|-----------------------|----------------------|--|--|--|--|
| RLPE | RT-Rectangle | H-Horizontal (Narrow Dimension is Top to Bottom) | XX Write in Height | XX Write in Width | 27-2700K | TC-Touch Controls (With last state memory) | T- Top Center ³ | AF-Anti Fog (heated) AM-Anti Microbial AG-Anti Graffiti |
| | SQ-Square | V-Vertical (Narrow Dimension is Left to Right) | | | 30-3000K | MC-Motion Controls | B- Bottom Center ³ | MB3-Magnification Built In 3x ⁴ MB5-Magnification Built In 5x ⁴ |
| | | | | | 35-3500K | NC-No Controls ² | L- Left Center ³ | NL-Night Light |
| | | | | | 40-4000K | | R- Right Center ³ | BT-Bluetooth Speaker |
| | | | | | 50-5000K | | | I65-IP65 Rating |
| | | | | | AC-Adjustable ¹ Pick 3 CCT options | | | RC-Rounded Edge Corners |
| | | | | | ¹ Touch Controls (TC) Required | ² 24" Bare wire included; using other wall controller | ³ Availability based on illumination style selected | ⁴ Illuminated 3500K frosted edge ring |

Specifications are subject to change without notice. Installation must be performed in accordance with Reflective Lighting installation instructions.

118 E 3RD ST SUITE K | PERRYSBURG, OH 43551 | 419-908-2759 | WEBSITE: REFLECTIVE.LIGHTING